

NOBODY WANTS GIST TUMOURS WE DO... NATIONAL GIST TISSUE BANK

GIST RESEARCH WILL PROGRESS FASTER IF THERE IS A GOOD SUPPLY OF GIST TISSUE

Gastro **I**ntestinal **S**tral **T**umours (**GIST**) are rare.

Around 850 new patients are diagnosed with GIST cancer in the UK each year.

**The National GIST Tissue Bank is based
at The Royal Marsden, London.**

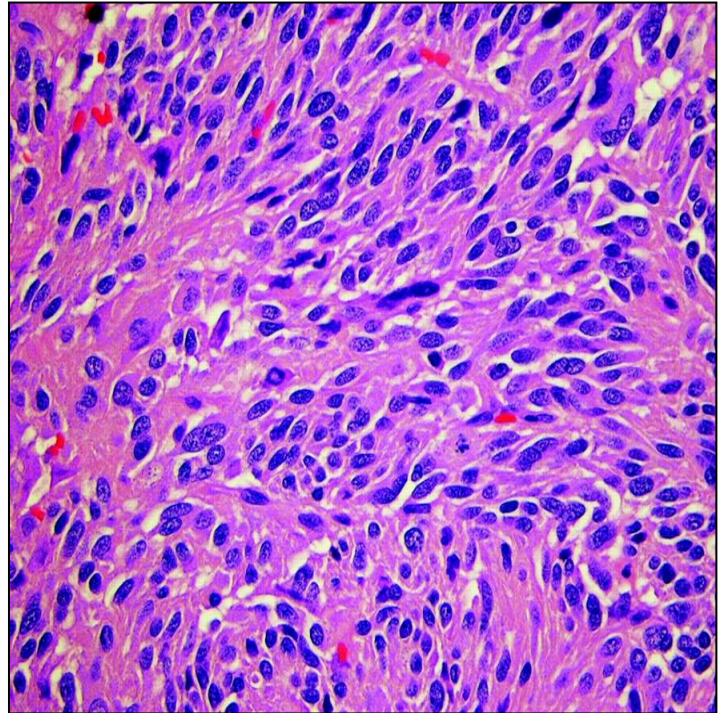
What does this mean for you?

- This tissue bank is a valuable resource that supports GIST cancer research locally, nationally and internationally.
- It provides researchers with a diverse selection of high-quality GIST tumour specimens and clinical data obtained by dedicated tissue bank staff who follow strict procedures and ethical guidelines.
- Research will progress faster if there is a good supply of GIST tissue upon which to test potential treatments and develop new diagnostic tests.

How does the Tissue Bank Operate?

Operating within the Royal Marsden in London, the National GIST Tissue Bank coordinates the collection, storage and distribution of a variety of biospecimens including fresh, frozen and paraffin blocks in addition to blood samples and clinical data.

Working in collaboration with pathologists, medical oncologists, surgeons and other hospital personnel, specially trained staff obtain patient consent, collect samples and assemble clinical information about each donor and their corresponding specimens.



YOU CAN HELP BY DONATING TISSUE ...

If you are a GIST patient who is preparing to have a GIST tumour removed and your GIST type is other than exon 11.

Please contact gistbiobank@rmh.nhs.uk and copy jayne.bressington@nhs.net or phone 0207 8118395 in good time to make arrangements for your tissue donation.

CONTACT INFORMATION

Website: gistcancer.org.uk/national-gist-tissue-bank/

Contact: gistbiobank@rmh.nhs.uk

Address: Tissue Manager
National GIST Tissue Bank
Royal Marsden Hospital,
Fulham Road, London,
SW3 6JJ

Phone: 0207 8118395

National GIST Tissue Bank
Professor Robin Jones – Principal Investigator